



Bacton Street, London, E2

BUTLER  STAG





**Price Guide £375,000 - £400,000**  
**A beautifully presented 782 Sq/Ft, two-bedroom apartment set on the third floor of a classic redbrick mansion block on Bacton Street, in the heart of Bethnal Green.**



## Leasehold

- 782 Sq/Ft Internal Living Space
- Third Floor Apartment
- Chain Free
- Handsome Redbrick Apartment Block
- Two Bedrooms
- Light Filled Apartment
- Close Proximity To Bethnal Green Tube Station
- Victoria Park A Moments Walk Away

This bright and well-proportioned home is positioned within an elegant 20th-century mansion block, the property benefits from high ceilings, generous room sizes and large windows that bring excellent natural light into each room.

The accommodation comprises a spacious reception room, a separate fitted kitchen with ample storage, two well-sized double bedrooms, and a modern family bathroom. The layout has been thoughtfully arranged to maximise the 782 sq ft footprint, offering comfortable living space for couples, sharers, or those seeking a convenient pied-à-terre close to the City.

Residents benefit from secure entry, and the charm and solidity typical of mansion-block architecture.

Located on a quiet residential street just moments from Bethnal Green Underground Station, the apartment offers superb access to the Central line, Columbia Road, Broadway Market, Victoria Park, and an array of cafés, independent shops and transport links.







## Butler House

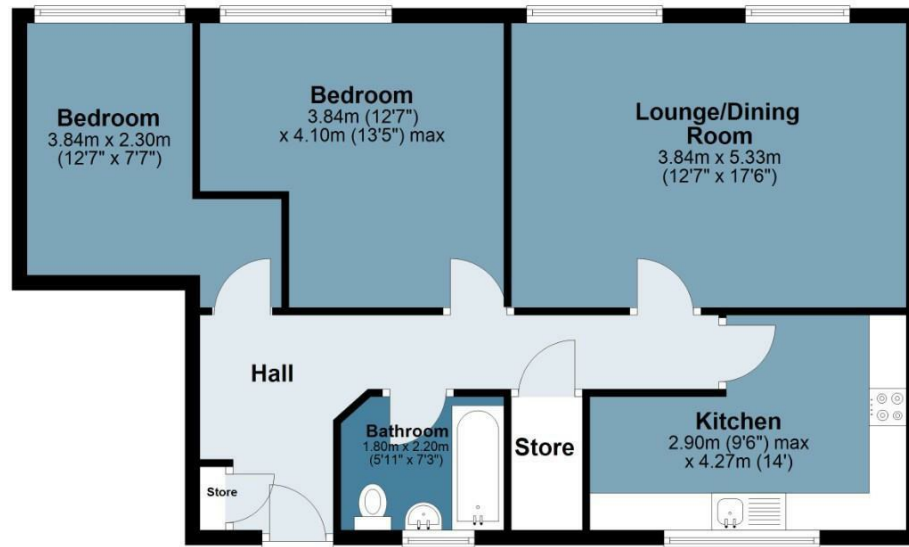
Approx. Gross Internal Area 72.7 Sq M ( 782 Sq Ft )

BUTLER & STAG



### Third Floor

Approx. 72.7 sq. metres (782.0 sq. feet)



Measurements are approximate and for illustration purposes only. While we do not doubt the accuracy and completeness, we advise you conduct a careful independent assessment of the property to determine monetary value.  
© @modephoto.uk www.modephoto.co.uk

IMPORTANT NOTICE - These particulars have been prepared in good faith and they are not intended to constitute part of an offer or contract. We have not performed a structural survey on this property and the services, appliances and specific fittings have not been tested. All photographs, measurements, floor plans and distances referred to are given as a guide and should not be relied upon.

BUTLER & STAG

☎ 020 8102 1236

🏠 508 Roman Road, Bow, London, E3 5LU

✉ bow@butlerandstag.com

[www.butlerandstag.uk](http://www.butlerandstag.uk)